



Installing Z3D's Motor Centering Kit (Fits Team Losi XX Vehicles)

Packaging:

- 1 x Slipper Spring Spacer
- 1 x Slipper Plate Spacer
- 3 x Motor Plate Spacers
- 3 x 1/16" Plastic Washers
- 3 x 1.25" 4-40 Cap Screws
- 1 x Drilling Template/Jig

Tools Needed:

- 7/64", 1/8" or 3mm Drill Bit
- 1/16" or 1.5mm Drill Bit
- Sharpie Style Marker

Instructions:

Step 1. Remove Motor

Step 2. Remove Slipper Assembly

Step 3. Remove Motor Plate (**Note:** Existing motor plate screws will be replaced with new 1.25" supplied screws)

Step 4. Using the supplied *Drilling Jig*, align the jig using the original mounting holes, see Figure 1 & 2.

Step 5. Use *Sharpie Style* marker the outer hole, see Figure 3.

Step 6. Holding Drilling Jig, drill inner hole with smaller 1/16" or 1.5mm Drill Bit. **Note:** If you do not have a smaller starter bit, you could use the larger 7/64", 1/8" or 3mm Drill Bit, see Figure 4.

Step 7. Holding Drilling Jig, drill outer hole with smaller 1/16" or 1.5mm Drill Bit. **Note:** If you do not have a smaller starter bit, you could use the larger 7/64", 1/8" or 3mm Drill Bit, see Figure 5 & 6.

Step 8. If you used a smaller drill bit, enlarge the holes with the 7/64", 1/8" or 3mm Drill Bit, see Figure 7.

Step 9. Place *Plate Spacers* on gearbox, see Figure 7. **Note:** The asymmetric spacer goes on the upper hole

Step 10. Reinstall the motor plate using the supplied screws and washers. If you are using the upper mount to secure a fan, do not use the washer, see Figure 8.

Step 11. Install the slipper spacer on top shaft with the ROUNDED side towards the gearbox. Install slipper assembly and place new spring spacer, See Figure 9 & 10.

Step 12. Reinstall gearbox, reset your slipper and have fun!

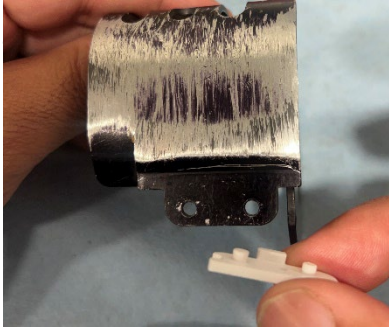


Figure 1



Figure 2

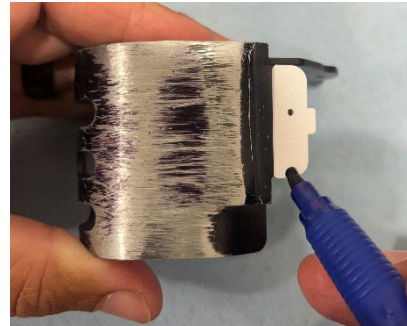


Figure 3



Figure 4

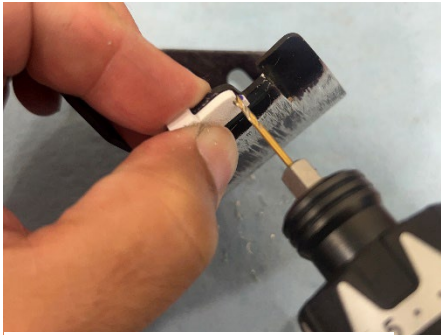


Figure 5



Figure 6



Figure 7



Figure 8



Figure 9



Figure 10